



BUILDING A FUTURE OF HOPE

2020 CAPITAL CAMPAIGN

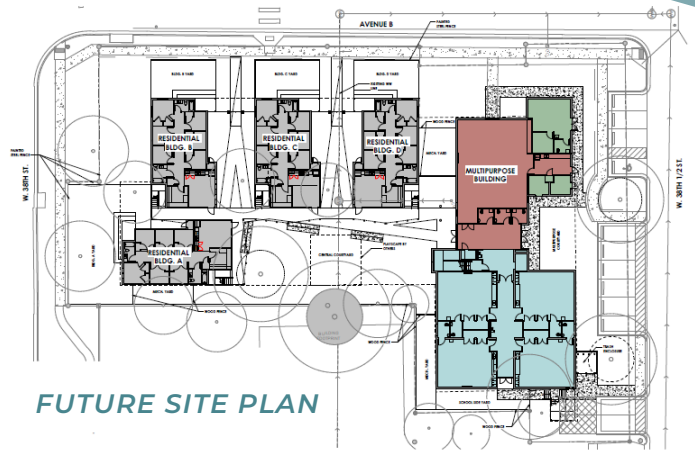
TOGETHER, WE WILL BUILD A FUTURE OF HOPE.



HELPING HAND HOME is a special place, unlike any other in the state of Texas. We exist to serve the most vulnerable children in our community. We believe each child deserves a loving and permanent home. That's why we offer services along a continuum of care, from a nurturing and therapeutic home for children suffering from trauma, to an onsite charter school, to foster and adoption services.

Some of our children have experienced the worst of humanity. They come to live with us as victims of crime, often having suffered abuse and neglect at the hands of family members who should have been their protectors. The resulting trauma is often life shattering. We take those shattered lives and help begin the healing process. Through comprehensive, innovative services that care for the whole child, we equip them with tools to rebuild their lives so they can reclaim their futures. But that's not all we do. We want to see every child in foster care, whether or not they live with us, find their forever home. That's why we offer foster, adoption and family services, to support a child's journey to a stable, loving and permanent home.

Everyone connected to Helping Hand Home, from the staff, to the volunteers, to the donors, know they have a significant opportunity to make a lasting difference in a child's life. When children



FUTURE SITE PLAN

fail in other settings, they often thrive with us. That's why we like to say that **Hope Happens Here**. And, for more than 125 years we have been offering hope to the children of Central Texas. Our passion to serve has grown alongside the needs of our community. But each year we turn away nearly 100 children in need of residential treatment. And the crisis of children in foster care in our state is only growing. That's why we've embarked on a 2020 Capital Campaign. This \$14.8 million effort will enable us to serve more children, enhance their quality of care and build our capacity to serve more families looking to foster and adopt. The Capital Campaign will fund new housing, a new Education and Community Center, space for expanded foster and adoption services and a sustainability fund. Hope is already happening – but we need space for more. **Join us in building a future of hope.**

A HOME FOR HOPE

We believe our children deserve to be nurtured in an environment that makes them feel safe, valued and loved. That's why a high priority of this Capital Campaign is to build new housing that will create family-like spaces and individual bedrooms to help children heal and transition.



41%
INCREASE
IN CAPACITY

The project will fund the construction and furnishing of eight homes that will be built in four new unique "Tree Houses" surrounding a courtyard and green space for them to heal and flourish. Capacity will increase by 41% by adding the additional bedrooms.



FINDING FOREVER HOMES



We want to see every child in foster care, whether or not they live with us, find their forever home.

That's why the Capital Campaign will enable us to grow our foster, adoption and family services.

This expansion will allow us to support more children on their journey to a stable, loving and permanent home, and ultimately will enable us to double the number of children served in this community-wide program.



2X
CHILDREN
SERVED

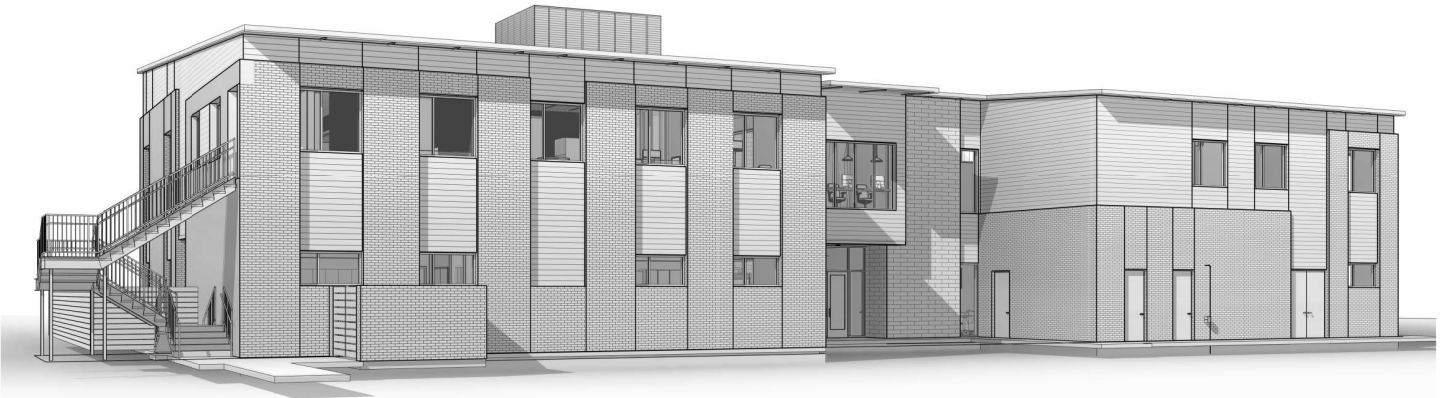
EDUCATING FOR IMPACT

Because of the residual impacts of the trauma they have faced, many of our children are not capable of attending traditional public school.

We started our own onsite Charter School to help educate and equip them to prepare for the future. The Capital Campaign will fund a new Education Building that will replace portable buildings and include a state-of-the-art education facility equipped to meet their unique learning needs.

We are also a national model for best practices in dealing with children suffering from trauma. People come to us for our expertise in the most comprehensive, cutting-edge methods of treatment and care. That's why our Education Building will also include a large education and learning center. Expanding our facilities will amplify our ability to train more people and impact more lives.

HELPING HAND HOME EDUCATION CENTER



MODERNIZING FOR THE FUTURE



Our team of highly-skilled and trained therapists and therapeutic specialists offers around the clock care that is time and resource-intensive. In some of the most challenging circumstances our staff and volunteers show up and are present for our most vulnerable children.

The Capital Campaign will allow us to modernize our facilities and expand our capacity to serve. This important effort will help us continue to attract the highest quality staff and volunteers our children deserve. This project will allow us to renovate our current facilities and create shell space for future expansion.

SUSTAINING HOPE



Helping Hand Home has always been a thoughtful, strategic steward of our resources, growing our campus building-by-building. Our Capital Campaign capitalizes on these existing resources in efficient ways, making the most of valued land and space in the heart of Austin. With the expanded capacity to serve comes increased expenses. To ensure stability for the children and families we serve, we will continue to be future-focused and ensure we can meet those expenses now and into the future.

A sustainability fund is a vital to ensuring that once we build the future for hope – we can sustain it.